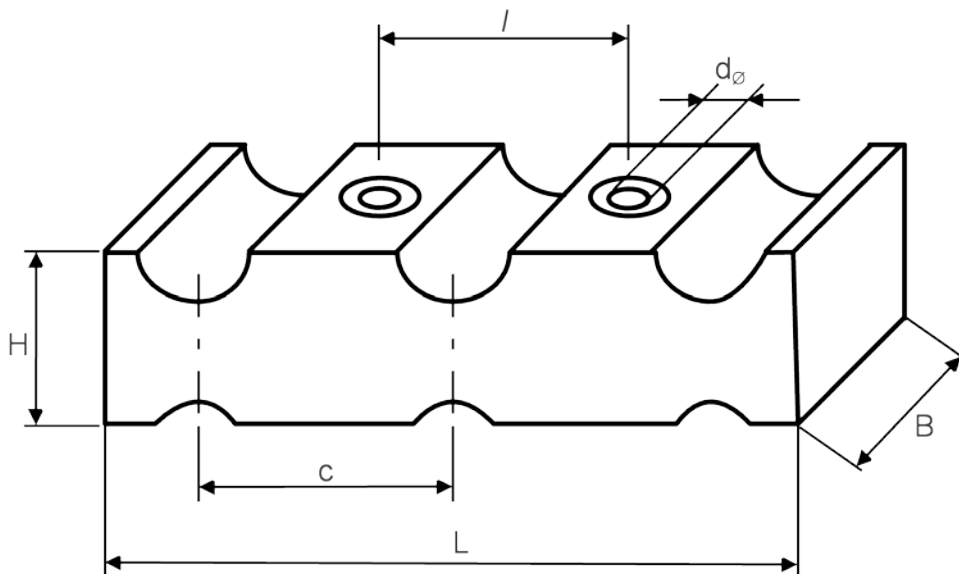


Block Clamp

- Type: **RS3**
- Application: Parallel fastening of single- and multi-conductor cables in three group block, unrestricted application indoors and outdoors
- Material: Polyamide
- Outer diameter of cables: 12 mm to 32 mm
- Mechanical resistance to short circuits: 10,000 N
- Max. torque for tightening screws: 8 Nm



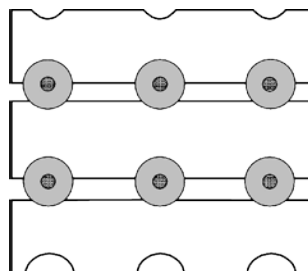
Dimensions in mm

Type	D _ø	L	B	l	d _ø	H	c
RS3 - 12/32	12 - 32	202	53	75	13	51	75

D_ø: outer cable diameter

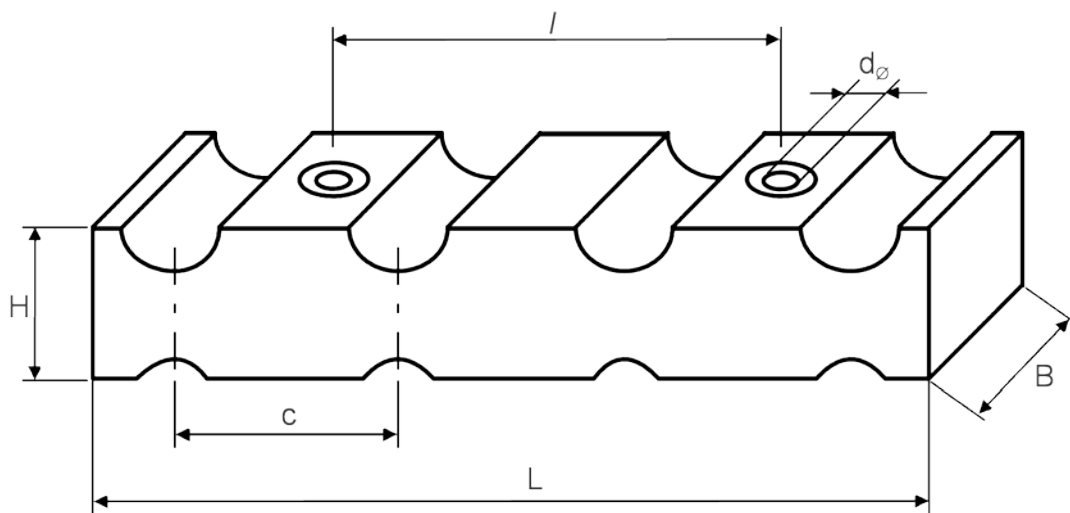
Minimum order quantity and delivery time upon request

Fastening example:



Block Clamp

- Series: **RS4**
- Application: Parallel fastening of single- and multi-conductor cables in four group block, unrestricted application indoors and outdoors
- Material: Polyamide
- Outer diameter of cables: 12 mm to 32 mm
- Mechanical resistance to short circuits: 10,000 N
- Max. torque for tightening screws: 8 Nm

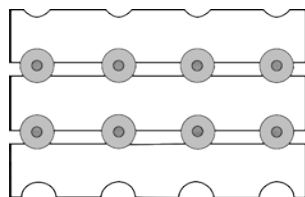


Dimensions in mm

Type	D_{\varnothing}	L	B	l	d_{\varnothing}	H	c
RS4 - 12/32	12 - 32	275	53	150	13	51	75

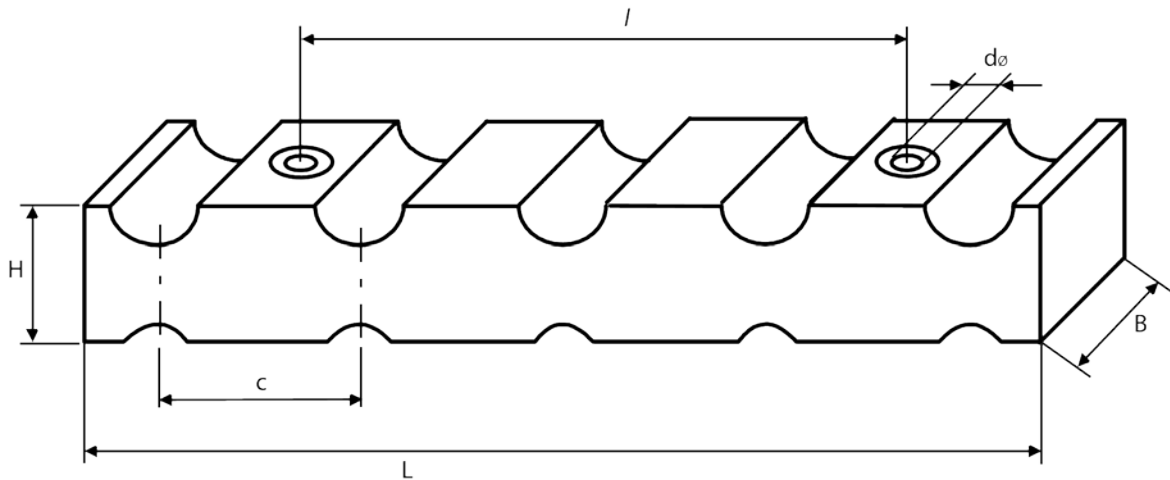
D_{\varnothing} : outer cable diameter

Fastening example:



Block Clamp

- Type: **RS5**
- Application: Parallel fastening of single- and multi-conductor cables in five group block, unrestricted application indoors and outdoors
- Material: Polyamide
- Outer diameter of cables: 12 mm to 32 mm
- Mechanical resistance to short circuits: 10,000 N
- Max. torque for tightening screws: 8 Nm



Dimensions in mm

Type	D _ø	L	B	l	d _ø	H
RS5 - 12/32	12 - 32	350	53	225	13	51

D_ø: outer cable diameter

Minimum order quantity and delivery time upon request

