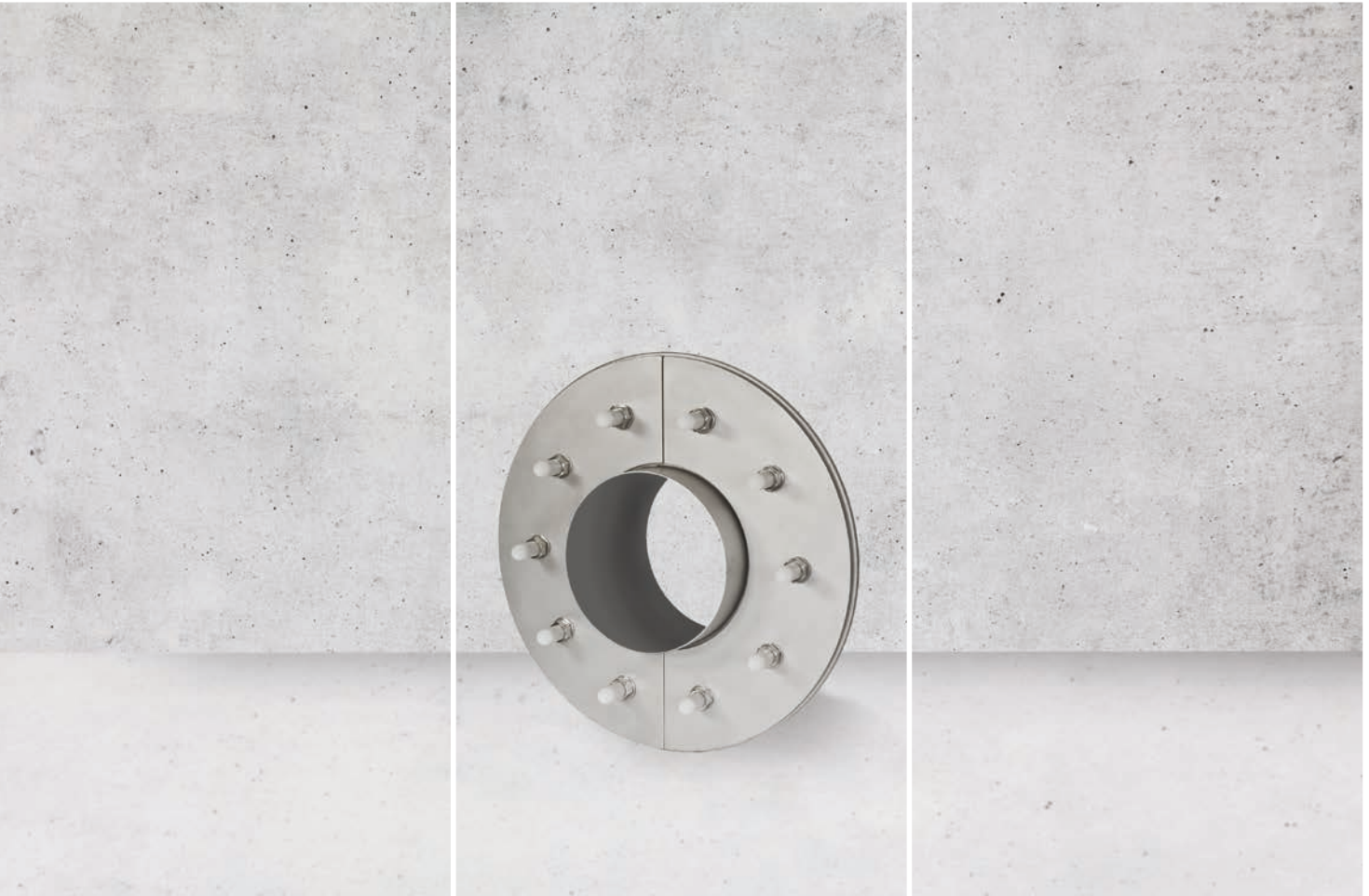


Always. Reliable. Tight.

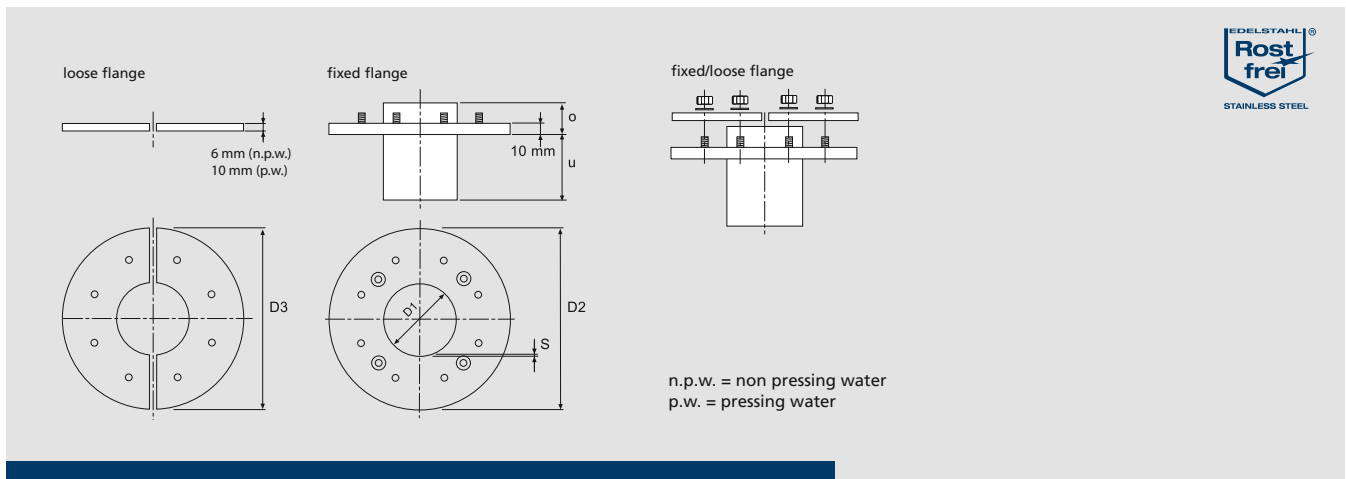


Stainless steel wall sleeve

HRD wall sleeve with fixed/loose flange for dowelling. For buildings with waterproof sheetings/thick coatings.

HRD wall sleeve with fixed/loose flange for dowelling

Technical data



Features and technical data:

- absolutely gas- and watertight
- load type: non pressing water according to DIN 18195, Part 5 suitable for installation in ceilings and floors – material thickness 6 mm
- load type: pressing water according to DIN 18195, Part 6 – material thickness 10 mm
- fixed/loose flange according to DIN 18195, Part 9
- stainless steel V2A (AISI 304L) or V4A (AISI 316L)

Article code:

HRD (D1)-FUFA/o/u

(o = upper length, u = lower length)

Scope of delivery:

Fixed flange, comprising of a stainless steel plate with a stainless steel pipe welded on, sealed on both sides with PE cover.
Split loose flange. M12 (non pressing water)/ M20 (pressing water) nuts and bolts.

Material: standard V2A (AISI 304L)
available as an option V4A (AISI 316L)
with fixing elements for concrete

- suitable seal inserts: see catalogue press seals for cables and pipes

Wall sleeves for building entry systems in floor slabs and walls with damp-proof membranes, conforming to DIN 18195, Part 9, suitable for non pressing water or pressing water.

HRD wall sleeve with fixed/loose flange for dowelling

Technical data – for non pressing water

Wall sleeve D1 ID	Non pressing water		Media pipe		Article code	Wall sleeve S wall thickness	Article code inlays
	Fixed flange D2 OD	Loose flange D3 OD	Optimal application range OD	Max. possible application range OD*			
80 mm	224 mm	214 mm	0 – 50 mm	0 – 56 mm	HRD 80-FUFA/o/u	2 mm	Z-80 FUFA
100 mm	244 mm	234 mm	0 – 63 mm	0 – 76 mm	HRD 100-FUFA/o/u	2 mm	Z-100 FUFA
125 mm	270 mm	260 mm	63 – 90 mm	0 – 101 mm	HRD 125-FUFA/o/u	2 mm	Z-125 FUFA
150 mm	295 mm	285 mm	90 – 112 mm	0 – 125 mm	HRD 150-FUFA/o/u	2 mm	Z-150 FUFA
200 mm	347 mm	337 mm	110 – 162 mm	0 – 171 mm	HRD 200-FUFA/o/u	3 mm	Z-200 FUFA
250 mm	397 mm	387 mm	160 – 210 mm	0 – 214 mm	HRD 250-FUFA/o/u	2,5 mm	Z-250 FUFA
300 mm	450 mm	440 mm	200 – 225 mm	0 – 250 mm	HRD 300-FUFA/o/u	3 mm	Z-300 FUFA
350 mm	497 mm	487 mm	225 – 270 mm	0 – 310 mm	HRD 350-FUFA/o/u	3 mm	Z-350 FUFA
400 mm	547 mm	537 mm	270 – 320 mm	0 – 350 mm	HRD 400-FUFA/o/u	3 mm	Z-400 FUFA
450 mm	600 mm	590 mm	320 – 370 mm	0 – 400 mm	HRD 450-FUFA/o/u	4 mm	Z-450 FUFA
500 mm	650 mm	640 mm	370 – 420 mm	0 – 450 mm	HRD 500-FUFA/o/u	4 mm	Z-500 FUFA

Order example:
specified pipeline
OD = 110 mm
o = 50 mm
u = 200 mm
Article code:
HRD 150-FUFA/50/200

Customized dimensions available on request.

o = upper length, u = lower length

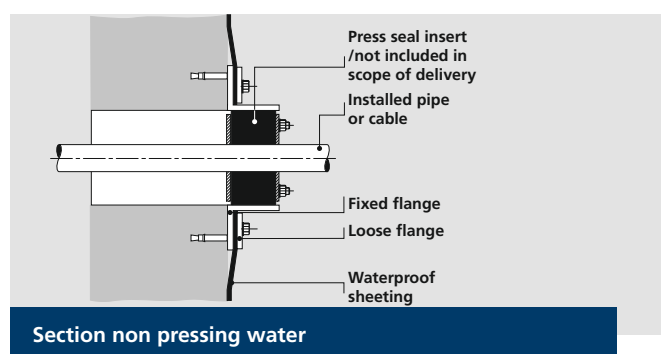
Fixing elements are included in scope of delivery!

Depending on the sealing sheet 1 or 2 layer in different thickness - 2 mm or 6 mm - are required.

* The dimensions refer to the maximum possible outer diameter for the medium pipe;
subject to technical feasibility, a standard press seal or a individual press seal entry may be used.
For diam. > 250 mm the loose flange will be supplied in split version..

EPDM rubber inlays are suitable for the sheeting given in the norm.

For the following sheetings we recommend 2 inlays: ECB, PIB, PVC-P, EPDM, EVA, PE, PE-HD and PVC.
Please note: recommendation of manufacturer of sheetings has to be followed.
Connecting solutions for KMB polymer modified thick coatings on request.



HRD wall sleeve with fixed/loose flange for dowelling

Technical data – for pressing water

Wall sleeve D1 ID	Pressing water		Media pipe		Article code	Wall sleeve S wall thickness	Article code inlays
	Fixed flange D2 OD	Loose flange D3 OD	Optimal application range OD	Max. possible application range OD*			
80 mm	405 mm	395 mm	0 – 50 mm	0 – 56 mm	HRD 80-FUFA/o/u	2 mm	Z-80 FUFA
100 mm	425 mm	415 mm	0 – 63 mm	0 – 76 mm	HRD 100-FUFA/o/u	2 mm	Z-100 FUFA
125 mm	450 mm	440 mm	63 – 90 mm	0 – 101 mm	HRD 125-FUFA/o/u	2 mm	Z-125 FUFA
150 mm	475 mm	465 mm	90 – 112 mm	0 – 125 mm	HRD 150-FUFA/o/u	2 mm	Z-150 FUFA
200 mm	528 mm	518 mm	110 – 162 mm	0 – 171 mm	HRD 200-FUFA/o/u	3 mm	Z-200 FUFA
250 mm	578 mm	568 mm	160 – 210 mm	0 – 214 mm	HRD 250-FUFA/o/u	2,5 mm	Z-250 FUFA
300 mm	630 mm	620 mm	200 – 225 mm	0 – 250 mm	HRD 300-FUFA/o/u	3 mm	Z-300 FUFA
350 mm	680 mm	670 mm	225 – 270 mm	0 – 310 mm	HRD 350-FUFA/o/u	3 mm	Z-350 FUFA
400 mm	730 mm	720 mm	270 – 320 mm	0 – 350 mm	HRD 400-FUFA/o/u	3 mm	Z-400 FUFA
450 mm	780 mm	770 mm	320 – 370 mm	0 – 400 mm	HRD 450-FUFA/o/u	4 mm	Z-450 FUFA
500 mm	830 mm	820 mm	370 – 420 mm	0 – 450 mm	HRD 500-FUFA/o/u	4 mm	Z-500 FUFA

Order example:
specified pipeline
OD = 110 mm
o = 50 mm
u = 200 mm
Article code:
HRD 150-FUFA/50/200

Customized dimensions available on request.

o = upper length, u = lower length

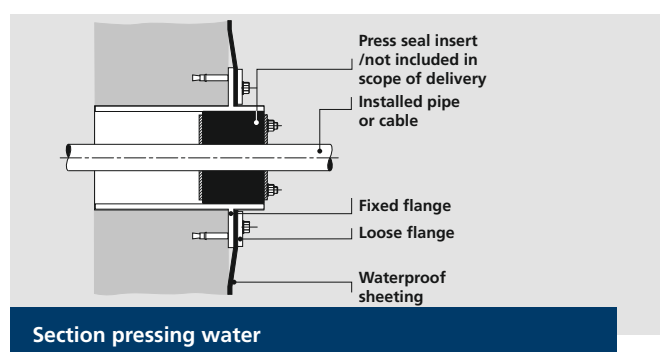
Fixing elements are included in scope of delivery!

Depending on the sealing sheet 1 or 2 layer in different thickness - 2 mm or 6 mm - are required.

* The dimensions refer to the maximum possible outer diameter for the medium pipe;
subject to technical feasibility, a standard press seal or a individual press seal entry may be used.
For diam. > 250 mm the loose flange will be supplied in split version..

EPDM rubber inlays are suitable for the sheeting given in the norm.

For the following sheetings we recommend 2 inlays: ECB, PIB, PVC-P, EPDM, EVA, PE, PE-HD and PVC.
Please note: recommendation of manufacturer of sheetings has to be followed.
Connecting solutions for KMB polymer modified thick coatings on request.



Section pressing water